

COMPLETED PROJECT

WWW.JOSHUAJAMESLTD.CO.UK



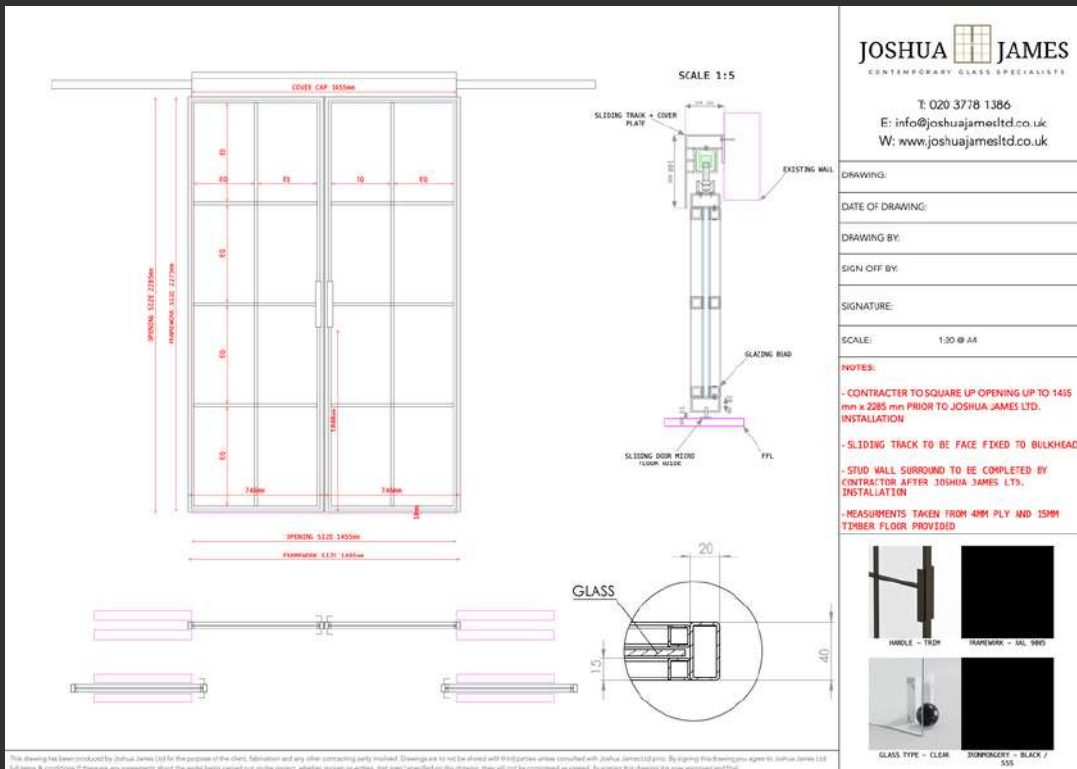
JOSHUA JAMES LTD.

DOUBLE SLIDING DOOR SET
GODALMING, SURREY

LEAD TIME:
7 WEEKS

PROJECT VALUE:
£4,190 + VAT

Design.

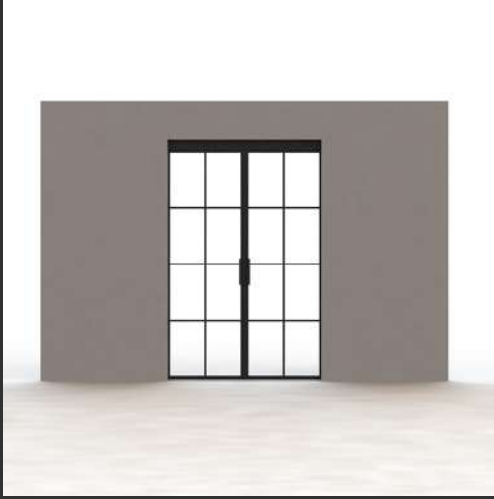


Months before commencing their home renovation in Godalming, our clients made a visit to our showroom with a clear vision in mind. With a focus on creating an open-plan living space that offered flexibility for division when needed, they were determined to find the perfect doors to complement their new interior.

Their ambitious renovation plan involved the removal of interior and external walls to transform the rear of their property into a spacious, light-filled area ideal for entertaining.

The possibility of hinged doors was quickly dismissed given the reconfiguration plans for their property. With limited space available for doors to swing open without causing disruption, alternative solutions were sought after.

DOUBLE SLIDING DOOR SET
GODALMING, SURREY



Enthusiastic about the idea of a double pocket door set, our client found it to be the perfect fit for the new layout of their home. With our InoCross20 doors, they were greeted with ample natural light and captivating garden views as soon as they entered the property.

Our doors complemented the glass-to-glass corner window, spacious external doors at the rear of the property and the skylights in the open-plan kitchen/dining area.

Utilising pocket doors allowed for the complete opening of the hallway when desired.

Following extensive discussions, the client opted to leave the pocket door mechanism exposed on one side, allowing for easy access to the runners for potential maintenance needs in the future. To accommodate this decision, we crafted a custom cover plate to enclose the running track and door hangers, ensuring seamless functionality while preserving accessibility for maintenance purposes without the need for wall alterations.

Crafted from durable steel, our doors typically demand no maintenance, offering long-lasting performance. However, as a precautionary measure, we advise ensuring at least one side remains accessible in case of any potential adjustments needed in the future.

Project Photos.



BEFORE



AFTER

From survey to installation the inside of the property is almost unrecognisable. The new entrance hallway, featuring bespoke joinery and a light coloured parquet flooring, echos modern sophistication.

This project was finished in RAL 9005, a timeless choice, that the light tones of the interior assisted in highlighting. The door set works perfectly within the space, both aesthetically and practically. As one of the first features encountered upon entering the property, it was crucial for the doors to seamlessly integrate into the space.

The use of our minimalistic Trim handle with three horizontal bars and one vertical per door is a great middle ground between a modern and traditional design.

Being one of the first items that you are greeted with when you enter the property, it was imperative that the doors worked perfectly within the space.

DOUBLE SLIDING DOOR SET
GODALMING, SURREY



With no threshold featured, our InoCross20 doors facilitate a seamless flow of the floor between the hallway and kitchen, fostering a strong sense of connection.

The incorporation of our InoCross20 doors went beyond practicality to become a defining feature in shaping the atmosphere of the residence. With their slim framework and minimal sight lines, these doors were not just an architectural decision but a statement of elegance and sophistication. They serve as the ideal partition between the hallway and the entertaining area at the rear of the property, seamlessly preserving a harmonious sense of connectivity.

Retracting harmoniously back into purpose-built pockets, formed by the client's contractor, the doors effortlessly vanish when they are not drawn closed.

DOUBLE SLIDING DOOR SET
GODALMING, SURREY



COMPLETED PROJECT

CONTACT US TODAY.

RECEIVE YOUR
FREE QUOTE
INSTANTLY.

W: www.joshuajamesltd.co.uk

E: info@joshuajamesltd.co.uk

T: 020 3778 1386

JOSHUA  JAMES
CONTEMPORARY GLASS SPECIALISTS
